




Unlocking the **Science** of Manufacturing™



Ca
Capabilities

A blue square containing a white icon of a clock with two gears and a wrench, symbolizing time and manufacturing capabilities.

Se
Services

A blue square containing a white icon of a hand holding a gear with a wrench inside it, symbolizing services and manufacturing.

OUR VALUED CUSTOMERS



WHAT MAKES US DIFFERENT

Our Expertise

KMM Group Ltd. is dedicated to precision manufacturing, turning challenges into successes. We specialize in complex and intricate parts, excelling where others might struggle, and consistently delivering high-quality results.

Partnering with a one-stop manufacturing company like KMM Group offers advantages from initial design collaboration to a streamlined production process all the way to assembly and delivery.

Our Most Successful Partnerships

Our ideal partners are engaged and passionate. They understand the value that unparalleled expertise and the highest quality standards embody. They appreciate our prioritization of seamless communication, ensuring a smooth partnership experience.

Step into our state-of-the-art facility, where innovation and collaboration across multiple disciplines and industries unite with a single purpose – Unlocking the Science of Manufacturing™.



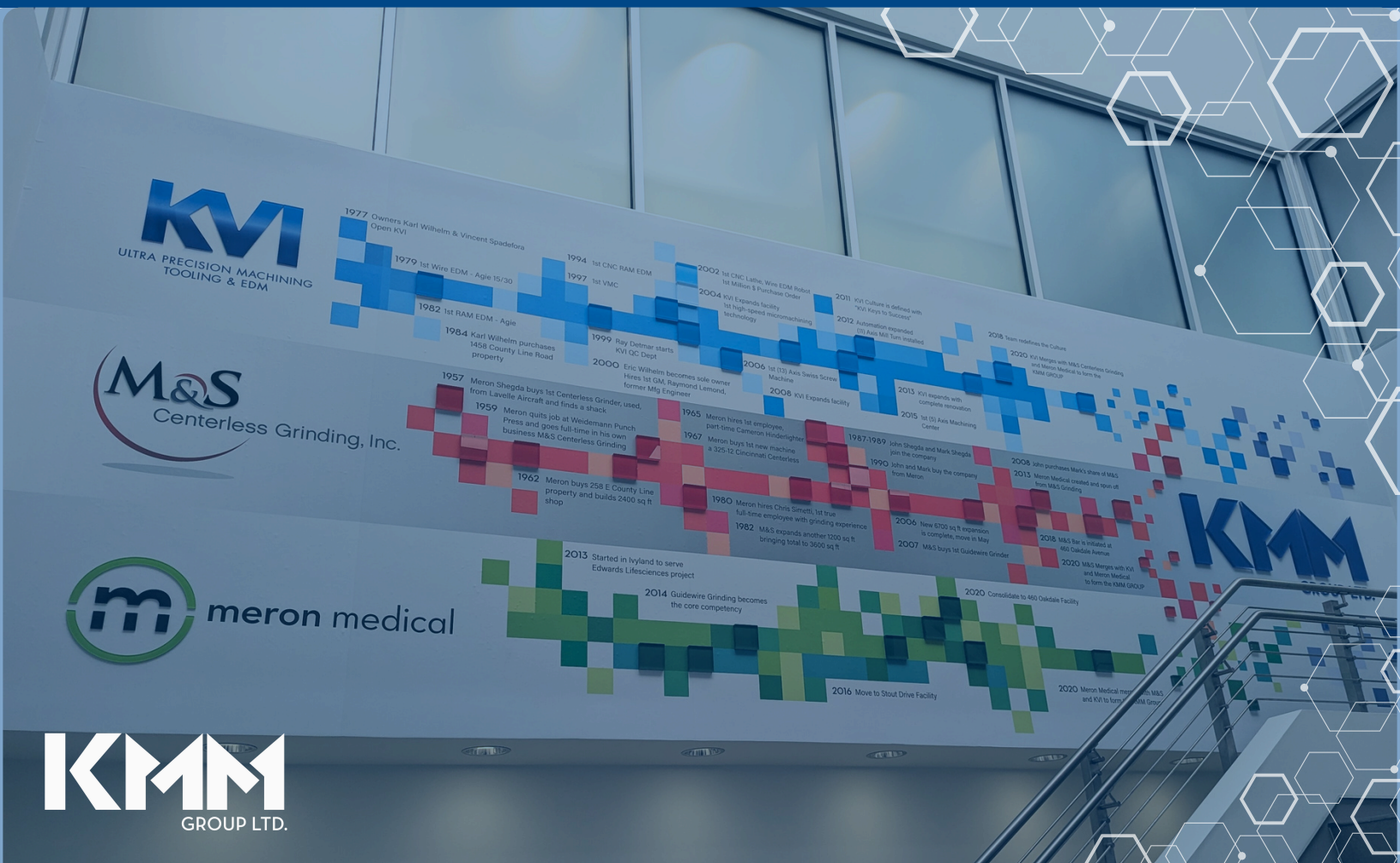
WHO WE ARE

Our History

KMM Group's origins lie in two family-owned precision manufacturing businesses. KVI Incorporated (KVI), founded in 1977 by Eric Wilhelm's father, grew from a small operation into a leader in ultra-precise manufacturing and custom tooling. Eric joined in 1994, assuming full ownership in 2000. M&S Centerless Grinding, established in the late 1950s by John Shegda's father, expanded from local grinding services to solving complex challenges for international clients under John's leadership, which began in 1987.

In 2013, John launched Meron Medical, leveraging M&S's expertise to provide high-level grinding solutions for advanced medical therapies. By 2019, Eric and John, recognizing the potential for a stronger, more competitive entity, merged their complementary businesses. This merger combined KVI's machining, wire EDM, and tool-making capabilities with M&S's precision grinding and Meron Medical's specialized solutions. The result is KMM Group, Ltd. a unified company offering comprehensive manufacturing services.

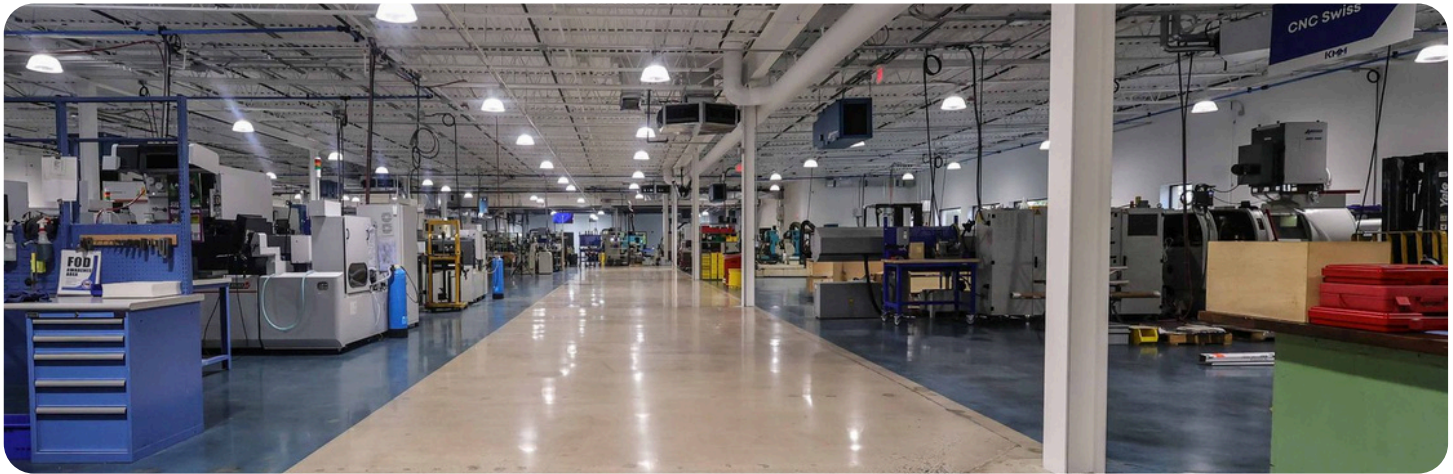
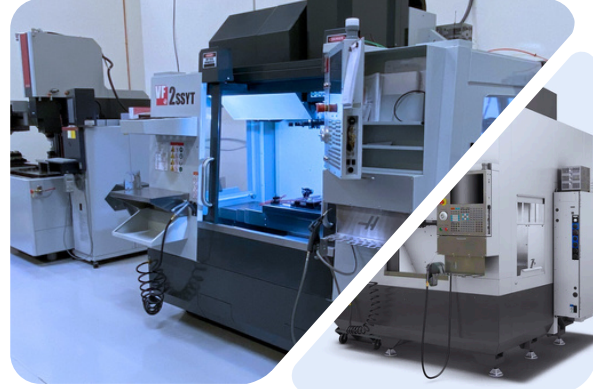
Today, KMM Group operates from a 100,000 square foot facility, blending decades of experience with cutting-edge technology. Our team remains committed to precision, innovation, and customer satisfaction across diverse industries.



Ultra-Precision Machining Expertise

We offer a full range of machining services to tackle even the most intricate and demanding tasks in manufacturing. With our diverse expertise, decades of experience, and advanced technologies, there's almost nothing we can't handle.

- Vertical Machining (5-axis milling)
- CNC Turning (with in-process gear hobbing)
- Wire EDM
- Ram EDM
- Swiss Screw Machining (up to 13-axis)
- Micro-Machining

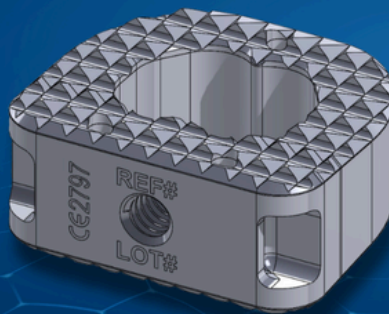


Vertical Machining (Milling)

- Envelope up to 40" x 20" x 20"
- 3-, 4-, and 5-axis milling
- Specialists in working with medical and aircraft alloys
- Tolerances to .0001" (2.5 μ)
- Finishes to < 8 Ra

VERTICAL MACHINING (MILLING)

ULTRA-PRECISION MACHINING



Envelope up to
40" x 20" x 20"



.0001"
tolerances



8 Ra
finishes



3-, 4-, and 5-axis
milling



Medical and
aircraft alloys

CNC TURNING

ULTRA-PRECISION MACHINING



3.15" (80mm) bar capacity, 31" between centers



.0002" tolerances



8 Ra finishes



11-axis capability



Experience with over 60 materials



Gear Hobbing

KMM
GROUP LTD.

CNC Turning

- **Bar Capacity:** Up to 3 1/8" inches (80 mm) diameter enabling automation.
- **Dimensional Tolerance:** ±0.0002 inches (±0.005 mm)
- **Surface Finish:** Finishes to 8 Ra
- In-process gear hobbing
- Live milling capability – ability to make square features and holes in one machine
- Dual spindles which increase productivity
- Y-axis capability adds to the control while doing live milling

Wire EDM

- Envelope up to 41.3" x 31.5" x 11.86"
- Ultra-Precision Wire EDM Tolerances <.0001"
- Finishes to 4 Ra
- B Axis (Rotary) for 6-axis 'Turn and Burn'
- Robotic Load/Unload for High Volume applications
- Wire diameter (min ≥ .002" 50 μ Ø)

WIRE EDM

ULTRA-PRECISION MACHINING



Envelope up to 41.3" x 31.5" x 11.86"



Ultra-precision wire EDM tolerances <.0001"



Finishes to 4 Ra



Robotic load/unload for high volume applications



B-axis (Rotary) for 6-axis 'Turn and Burn'

KMM
GROUP LTD.

KMM
GROUP LTD.

RAM EDM

ULTRA-PRECISION MACHINING



Hex, Torx, Clover,
and other socket
features for
surgical devices
and implants



Fine finish
performance to
4 Ra



0.0002"
tolerance
capability



Thin wall/deep
cavity
applications



EDM
drilling

KMM
GROUP LTD.

Ram EDM

- Fine Finish Performance to 4 Ra
- 0.0002" (5 μ) tolerance Capability
- Thin Wall/Deep Cavity applications
- EDM Drilling capabilities
- Multiple socket feature configurations for high-precision parts
- Dedicated electrode machining (custom tooling and fixtures in-house)

Swiss Screw Machining (up to 13-axis)

- Up to 38mm through the spindle
- Up to 13 axes
- 5-axis milling capabilities
- Tolerances to .0002" (5 μ)
- Specialists in working with medical and aircraft alloys
- Low volume to high production (50 to 500,000 pieces)
- Live tooling and milling capabilities
- Ability to run non-round bars for design versatility

SWISS SCREW MACHINING

ULTRA-PRECISION MACHINING



KMM
GROUP LTD.



Up to 32mm
through the
spindle



Tolerances
to .0002"
(5 microns)



Low- to high-
volume production
(50 to 500,000
parts)



Up to 13 axes



Specialists in
working with
medical and
aircraft alloys

MICRO-MACHINING

ULTRA-PRECISION MACHINING



Extremely small, intricate components



Possible in most machining disciplines, including Swiss, milling, & EDM



Features as small as .002"



Tolerances to microns

Micro-Machining

- Complex geometries and tight tolerances (to microns)
- Features as small as .002" (50 μ)
- Enhanced surface finish for minimal friction
- High-precision repeatability
- Possible in most machining disciplines

Ultra-Precision Grinding Expertise

Our ultra-precision grinding perfectly complements our expert machining capabilities. With every project, we consistently achieve sub-micron tolerances on diameters, complex geometries, and intricate features that were once considered unattainable. This synergy of precision and skill ensures that we not only meet but exceed the most demanding specifications.

- Guidewire/Corewire
- Ultra-Precision Centerless
- Multi-Axis CNC OD/ID Grinding
- Hybrid CNC Centerless
- Surface Grinding
- Micro-Grinding



Guidewire/Corewire Grinding

- Diameter tolerances to $\pm .0001''$ (2.5μ)
- Ground length tolerances to $\pm .005''$ (127μ)
- Wire lengths to 15 ft+ (4.6 m)
- Steps, tapers, ball ends, back tapers, tight corner radii, paddles, flats, etc.
- Bio-compatible materials, including Stainless Steel (SST) & Nitinol (NiTi)
- Producing wires and stylets for devices used in interventional cardiology & neuromodulation

GUIDEWIRE & COREWIRE GRINDING

ULTRA-PRECISION GRINDING





Diameter tolerances to $\pm .0001''$



Ground length tolerances to $\pm .005''$

Wire lengths to 15 ft+ Long grind lengths up to 48" (1200mm) in ongoing production.



Steps, tapers, ball ends, back tapers, tight corner radii, paddles, flats, etc.




Range of materials, including SST, NiTi, MP35N, precious metals, and additional "exotic alloys," like Inconel, and Hastelloy



PRECISION CENTERLESS GRINDING

ULTRA-PRECISION GRINDING



- 

Diameter tolerances to $\pm .0001''$
- 

Lengths to 14 ft (4.267m)
- 

Finishes to 2 Ra (.05 micron)
- 

All materials, including glass, M2, Tungsten, Titanium, and Nitinol, etc.



Precision Centerless Grinding

- Diameter capacities
 - Thrufeed: $.005''$ (.127mm) to $2.50''$ (63.5mm)
 - Infeed: as small as $.014''$ (.355mm)
- Lengths to 20 ft (4.267m) ** (20 ft length limited to bars $\leq .75''$ (19mm) diameter)
- Standard tolerances to $\pm .0001''$ (2.5μ)
- Ultra-precision tolerances to $\pm .00002''$ ($.5 \mu$)
- Precision bars ground for Swiss-screw machines with tolerances to $\pm .0001''$
- Finishes to $< 2 Ra$ ($.05 \mu$)
- All materials, including glass, M2, Tungsten, Titanium, and Nitinol, etc.

MULTI-AXIS CNC OD/ID GRINDING

ULTRA-PRECISION GRINDING



Multiple part features in one chucking



Diameter range:
OD - to 14"
ID - to 7"



Length range:
OD - to 40" Long
ID - to 7" Deep



Diameter tolerances to
+/- .00005" (1.2 micron)



Finishes to 2 Ra (.05 micron)



Eccentric and Non-Round grinding – shapes and non-round features generated by interpolation of the grinding wheel



Multi-Axis CNC OD/ID Grinding

- Multiple part features in one chucking
- Eccentric and Non-Round grinding – shapes and non-round features generated by interpolation of the grinding wheel
- Diameter range: OD to 14", ID to 7"
- Length range: OD to 40" Long, ID to 7" Deep
- Diameter tolerances to +/- .00005" (1.2 μ)
- Finishes to 2 Ra (.05 μ)
- Wide range of materials

Hybrid CNC Centerless

- CNC OD and CNC ID Grinding
- Super-thin (.001") wall thickness on OD/ID grinds without crushing the parts
- Diameter tolerances to +/- .00005" (1.2 μ)
- Diameter range: OD – .003" to 2.50", ID – .060" to 2"
- Intricate forms & Micro parts (ODs)
- Finishes to 2 Ra (.05 μ)
- All materials, including glass, M2, Tungsten, Titanium, and Nitinol.

HYBRID CNC CENTERLESS

ULTRA-PRECISION GRINDING



Diameter tolerances to +/- .00005" (1.2 microns)



Diameter range:
OD - .003" to 2.50"
ID - .060" to 2"



Finishes to 2 Ra (.05 micron)



All materials, including glass, M2, Tungsten, Titanium, and Nitinol



SURFACE GRINDING

ULTRA-PRECISION GRINDING



Tolerances to
+/- .001"



Finishes to 4 Ra



Wide range of materials
including Stainless Steel,
Inconel, Titanium,
Aluminum, and ceramics



KMM
GROUP LTD.

Surface Grinding

- Unmatched precision, tolerances to +/- .0001"
- Finishes to 4 Ra
- Flatness & Parallelism within +/- .0001" (25 μ)
- Intricate forms & Micro parts
- Wide range of materials including: Stainless Steel, Inconel, Titanium, Aluminum, and ceramics

Micro-Grinding

- Complex geometries and tight tolerances (to microns)
- Diameter tolerances to +/- .00005" (1.2 μ)
- Diameter range: OD - .003" to 2.50", ID - .060" to 2"
- lengths and diameters are controlled with exceptional precision
- High-precision repeatability
- Possible in Hybrid CNC Centerless & Guidewire Grinding

MICRO-GRINDING

ULTRA-PRECISION GRINDING



Diameter
tolerances to
+/- .00005"



Complex
geometries



Diameter range:
OD - .003" to 2.50"
ID - .060" to 2"



High-precision
repeatability



Possible in Hybrid
CNC Centerless &
Guidewire
grinding



KMM
GROUP LTD.

KMM
GROUP LTD.



Expanded Support (In-House & Managed)

- Coatings
 - PTFE, Parylene, Hydrophilic, Anodizing
- Laser
 - Cutting, Marking, Welding
- Coiling
- Heat-Treating
- Electropolishing

Comprehensive Solutions

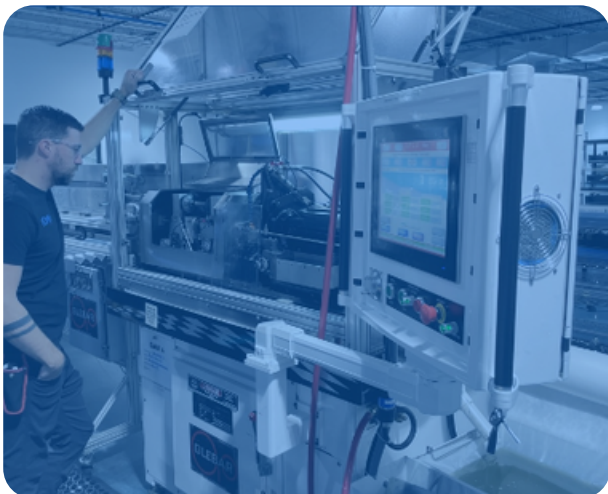
- Dedicated R&D Lab
- Engineering & DFMA
- Automation Development “Sandbox”
- Prototyping to Production



Empowering Supply Chain Success

We understand the importance of flexibility, adaptability, and partnerships in achieving supply chain success. Our philosophy is to invest alongside our clients, regardless of their size. We balance their growth with our own, and only by helping THEM succeed, do we succeed.

- Flexible Order Quantities
- Blanket Orders / LTAs / Supply Agreements
- Inventory Management



Unmatched Quality

ISO 13485 Certified



AS9100 D Certified



FDA Registered



Class 8 Clean Room



99% lot acceptance rate



>90% Net Promoter Score



QUALITY

Value Driven Success Formula

We put client support first with transparent, responsive service and direct access to our expert teams. We understand your needs, create innovative solutions for complex challenges, and lead the industry with our commitment to excellence.

1. Opportunity Dialog

We discuss your needs, quality standards, and requirements, as well as understanding what really matters beyond the text on the page.



2. Scope Clarification

We process your RFQ/RFP, and our business development engineer interacts directly with you, or your engineering staff, to review your project scope and provide an accurate quote.



3. Initiation

Upon your acceptance of our proposal, we assign the right engineer to your project, align our quality control with your standards, document the manufacturing and quality plan, conduct a quality engineering review (QER), and schedule a realistic timetable.



4. Execution

Now, it's time to make the promised parts. An assigned project manager will keep you updated, and a client support administrator is available for any questions, ensuring timely delivery.



5. Completion & Delivery

We complete your manufacturing project according to your needs and expectations, execute logistics, and communicate your shipment information.



6. Post Review

After your order is complete, we perform an engineering post-review process that involves securing and maintaining your data and files and requesting your feedback to ensure that we're ready to deliver our promise next time – and the time after that.



Our Values

- "We Lead"
- We empower our team to improve processes & set industry examples
- We're building a sustainable and purpose-driven organization



 info@kmmgrp.com

 <https://kmmgrp.com>

 **(888)-499-5657**

 [2200 Byberry Rd, Hatboro, PA 19040](#)



Unlocking the **Science**
of Manufacturing™